

Enterprise Integrated Planning

Client challenges

Technology is essential to succeeding in today's business environment and companies recognize the complexities of technology require a commitment to the development of robust capabilities to manage risk and create a more risk-aware culture. IT organizations facing the competing requirements of providing a dynamic and flexible yet stable and low cost technology platform must consider:

- What effect will a significant transformation program have across the enterprise?
- What measures can be taken to balance and manage competing run and change the business needs?
- How will specific changes impact technology programs and other initiatives such as the addition of new planned work or the modification of milestone dates?
- Are there sufficient resources available to execute the portfolio?
- How do current programs and initiatives align with compliance and regulatory findings and other matters requiring attention?

Kurt Salmon solutions

We have designed a solution- Enterprise Integrated Planning (EIP)-that helps CIOs maximize productivity of their IT organizations by balancing, managing and leveraging the dynamics of run and change the business imperatives:

- Providing "enterprise air traffic control" for business executives, this model helps organizations successfully manage technology with a top-down view of executional and operational risk
- Helping clients improve their execution of the entire transformation program by forecasting and identifying major interdependencies, critical points and milestones
- Working with clients to correlate multiple data points (changes, projects, incidents, resources) using support tools to identify areas of heightened risk and potential collisions to optimally respond and take action

Please contact:

Daryouche Behboudi
Lead Partner, North America
CIO Advisory Practice
daryouche.behboudi@kurtsalmon.com

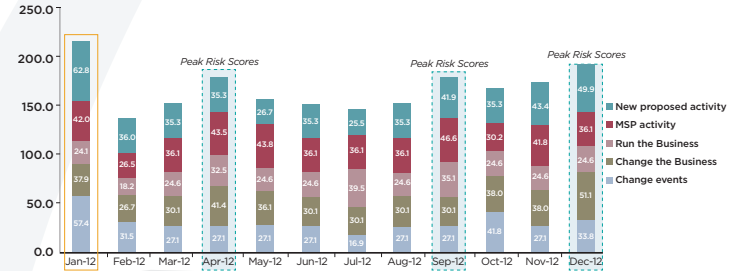
Simo Zerrifi
Manager, CIO Advisory
simohamed.zerrifi@kurtsalmon.com

Follow us on Twitter: @KurtSalmonCIONA

www.kurtsalmon.com

Illustrative deliverables

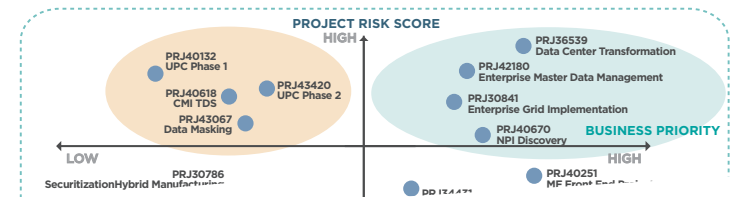
Forecasted view highlighting potential risk areas



Critical Skills Inventory

ASSET ID	CHANGE ID	PRJ TYPE	PRJ ID	START DATE	END DATE	UP/DOWN STREAM DEP	MSP VENDOR	MSP LIFECYCLE	RISK SCORE
AST00000000001284	CRG00000000256632			9/24/2012	9/26/2012	0	COI		1.0
AST000000000139707	CRG00000000223971	T1	PRJ36245	9/1/2012	9/2/2012	5	COI		11.0
AST000000000315782	CRG00000000036545	T1	PRJ45763	9/21/2012	9/22/2012	20	COI		11.0
AST0000000000147912	CRG00000000210314	BAU	PRJ46779	9/27/2012	9/28/2012	8	COI		1.0
AST000000000016730	CRG00000000210452	BAU	PRJ46779	9/14/2012	9/25/2012	3	COI		1.0
AST000000000033768	CRG00000000204795	BAU	PRJ799001	9/29/2012	10/3/2012	19	COI		11.0

Priority heat map



Data center transformation "best move window" analysis

